

# EMERITI *Newsletter*

Winter 2016

Vol.29, No. 2

## PRESIDENT'S MESSAGE

*Betty Chang*

Greetings on the start of a new calendar year. Our academic year so far has been an exciting one. Starting in the Fall, the Emeriti Board reexamined the Association's mission and discussed ways to increase our effectiveness. Our mission is to create and maintain an environment that enhances the connection between emeriti and campus. These connections are seen as useful, relevant, and allows emeriti to continue to contribute to the university. This environment encompasses academic, social, and interdisciplinary activities.

We strive to meet our mission through increasing active participation of Emeriti members, and by advocating for emeriti privileges, access to teaching, research and other departmental activities. We continue to modernize our communications including the Emeriti Association website, and electronic registration and payments.

One of the outreach activities of the Emeriti Association performed in conjunction with Carole Goldberg, Vice Chancellor for Academic Personnel is that of instituting pre-retirement workshops for faculty members considering retirement. The workshop has been met with enthusiastic participation and success. **David Lopez**, former member of the Emeriti Association Board of Directors, has been appointed inaugural UCLA faculty retirement liaison effective April 1, 2015 by Vice Chancellor Goldberg. He will

serve as an advisor and advocate for faculty who are considering retirement as well as those who have already retired.

A second outreach activity is our March 10, 2016 after-lunch program where we are opening our program to all active and retired faculty, for the program presentation followed by a beverages and wine and cheese reception.

Many of you have completed the Emeriti bio-bibliography survey distributed during the Fall. The UCLA Emeriti Association working in conjunction with the University of California System-wide Emeriti Associations conducts this survey every three years. A report of the results of the survey makes a strong statement to administrators and the legislature regarding the scientific research, teaching, and community contributions of the emeriti. If you have not already completed your survey, please do so immediately. If you need an additional copy of the blank survey to be completed, please contact the Emeriti/Retirees Relations Center (310) 825-7456 or email: [emeriti@errc.ucla.edu](mailto:emeriti@errc.ucla.edu). Upon completion of the analysis of the survey, a report will be shared with you via our Emeriti Association Newsletter as well as on our website.

Of equal importance is "news and activities" from you in an ongoing basis. Please send your news items and articles to the ERRC office: email [emeriti@errc.ucla.edu](mailto:emeriti@errc.ucla.edu), or mail : UCLA Emeriti Association, c/o Emeriti/Retirees Relations Center, 1116 Rolfe Hall, Box

951437, Los Angeles, CA 90095-1437, attention Ms. Ragini Espinosa Gill, ERRC director. For rapid dissemination and sharing, you are also invited to post your activities and general information on the Facebook group: [youseelayemeriti](https://www.facebook.com/youseelayemeriti).

On behalf of the UCLA Emeriti Association Board of Directors, I wish you a healthy, happy New year.

## BEN KARNEY WILL BE OUR WINTER DINNER SPEAKER

Our speaker at the Emeriti Association's second, and winter dinner meeting will be Benjamin Karney, PhD, Professor of Psychology at UCLA. The title of his presentation is "Learning from Couples Who are Not Middle-Class, College Educated, and White."

**Ben Karney** is a Professor of Social Psychology at the University of California, Los Angeles, and an adjunct behavioral scientist at the RAND Corporation. Karney is a "local" having grown up near UCLA. He got his undergraduate education at Harvard but returned to UCLA for his PhD. His research examines interpersonal relationships, especially marriage, and focuses on how relationship processes and interactions are facilitated or constrained by the contexts in which they take place. Currently, he leads the Los Angeles Project on Newlywed Development (LAPOND), a longitudinal study of low-income couples, and co-directs

(with Thomas Bradbury) the UCLA Relationship Institute. He has also consulted on the Strengthening Healthy Marriage project, a national experimental study of marital interventions for low-income populations, sponsored by the Administration on Children and Families.

Other work includes research on marriages in the military. At the University of Florida, where he taught prior to returning to UCLA, his research examined change and stability in early marriage, focusing on the processes through which initially satisfying marriages either remain satisfying or deteriorate over time. He has twice been the recipient of the National Council on Family Relations' Reuben Hill Research and Theory Award for outstanding contributions to family science. Among other publications, he is the author, with Bradbury of *Intimate Relationships*, published in 2010.

The Winter Dinner Meeting will be held Wednesday, February 10, 2016, in the California Room of the Faculty Center. The reception will begin at 4:45 p.m. Dinner begins at 6:00 p.m., and the program at 7:00 p.m. The dinner invitation and return envelope are enclosed with this Newsletter. To make reservations for the dinner using a credit card, please go to this link:

<https://giving.ucla.edu/Emeriti/winterDinner>

## AFTER LUNCH PROGRAMS

### Thursday, March 10, 2016:

The Speaker for this program is **Dan Treisman** who will speak on "Putin and Crimea: Anatomy of a Decision." He will attempt to explain how Putin came to make the

decision to occupy and then annex Crimea.

Daniel Treisman is a professor of political science at the University of California, Los Angeles and a research associate of the National Bureau of Economic Research. Educated at Oxford University (BA Hons. 1986) and Harvard University (Ph.D. 1995), his work focuses on Russian politics and economics and comparative political economy. He has published four books and numerous articles in leading political science and economics journals including the *American Political Science Review* and *The American Economic Review*, as well as in the public affairs journals *Foreign Affairs* and *Foreign Policy*. A former lead editor of *The American Political Science Review*, he has also served as a consultant for the World Bank and the European Bank for Reconstruction and Development, and as acting director of UCLA's Center for European and Eurasian Studies.

In Russia, he is a member of the International Advisory Committee of the Higher School of Economics and a member of the Jury of the National Prize in Applied Economics. He has been a Guggenheim Fellow and a visiting fellow at the Hoover Institution (Stanford) and the Institute for Human Sciences (Vienna), and has received fellowships from the German Marshall Fund of the US and the Smith Richardson Foundation.

His latest book, *The Return: Russia's Journey from Gorbachev to Medvedev* (The Free Press, 2011) was one of the *Financial Times'* "Best Political Books of 2011."

The talk is in the Hacienda Room and the schedule is as follows:  
1:30 - 2:30 pm, Program  
2:30 - 3 pm, Question & answer  
3:00 - 5 pm, Reception

### Thursday April 14, 2016:

The speaker for this program is **Ann Rimoin**, Associate Professor of Epidemiology in the School of Public Health. Anne will speak on "Ebola and Beyond: Preventing the Next Pandemic Before It Starts."

Anne Rimoin received her training at Middlebury College (B.A. African History, 1992), UCLA School of Public Health (M.P.H, International Health and Nutrition, 1996), and the Johns Hopkins Bloomberg School of Public Health (Ph.D. International Health, Division of Disease Prevention and Control, 2003).

In 2004, she founded the UCLA-DRC Research program in the Democratic Republic of the Congo, where the vast majority of her research is based. She collaborates closely with the DRC Ministry of Health, the Institut National de Recherche Biomedicale (National Institute of Biomedical Research and DRC National Reference Laboratory) and the Kinshasa School of Public Health.

Dr. Rimoin's main research focus is on the design and implementation of disease surveillance systems in remote rural areas to detect novel pathogens of animal origin that are crossing species into human populations in central Africa and to understand the epidemiology and ecological factors that influence transmission and spread of these diseases. Her ongoing work aims to elucidate the epidemiology of monkeypox and other emerging infectious diseases (EIDs) through active disease surveillance in remote regions of central Africa with subsistence hunters and other individuals who live and work at the human-animal interface and are at high risk for cross species disease transmission. These individuals represent an im-

portant sentinel population for monitoring viral disease emergence in a region from which numerous EIDs, including Ebola, Monkeypox, and Marburg have been known to recur.

In addition to her work on emerging infections, Dr. Rimoin also provides technical assistance to the Congolese government for general disease surveillance, polio eradication and routine immunization. She is currently conducting a study (funded by the Bill and Melinda Gates Foundation) to assess population immunity to vaccine preventable diseases which will help the Congolese government determine where to best focus their resources to close immunity gaps.

The talk is in the Hacienda Room and the schedule is as follows:  
1:30 - 2:30 pm, Program  
2:30 - 3pm, Question & answer  
3:00 - 5pm, Reception

*Steve Cederbaum*

## SAVE THE DATE

May 11, 2016; Spring Awards Dinner; California Room; 4:45 p.m., Social; 6:00 p.m., Dinner; 7:00 p.m., Program

June 9, 2016; After Lunch Program (Jointly with the UCLA Retirees' Association); Sequoia Room; 1:30 p.m., Speaker; 3:00 p.m., Reception

## DICKSON EMERITI PROFESSORSHIPS

There is still time to nominate a colleague or yourself for the **Dickson Award**. A candidate can be

an emeritus in any UCLA department and winners are chosen on the basis of their academic accomplishments since retirement. The many emeriti who are eligible have continued their scholarly careers, have continued to teach and have continued to have an impact at UCLA, in their chosen field or in their community. A successful application will have a letter of nomination outlining the candidates accomplishments since retirement, a letter from the chair supporting the candidate (these two can be one and the same), a CV, and two or three (at least) letters of support.

## NOMINATIONS INVITED FOR 2015/16 EMERITI ASSOCIATION OFFICERS

Nominations are requested for the 2015/16 Emeriti Association offices of Vice President/President-Elect and one Member-at-Large. Candidates for the office of Vice President/President-Elect must be members of the Academic Senate.

The Vice President/President Elect usually serves on the Executive Board for three years: first as President-Elect (and Chair of the Awards Committee), then as President, and finally as Past President, an essential advisor to the President and Vice-President. Members-at-Large serve two-year terms.

On July 1, 2016, this year's VP/President-Elect, Steve Cederbaum will assume the office of President and Betty Chang will become Past President. Corresponding Secretary Diane Childs, Treasurer Jane Permaul, and Member-at-Large Barbara Sinclair will stand for reelection.

Please direct nominations to:

Emeriti Association Nominating Committee  
c/o Emeriti/Retirees Relations Center  
1116 Rolfe Hall  
Box 951437  
Los Angeles, CA 90095-1437  
Fax 310-825-1572  
[emeriti@errc.ucla.edu](mailto:emeriti@errc.ucla.edu)

## WHAT'S YOUR ART?

**Find your paint brush, camera, clay, wood, beads, or materials and join the 38<sup>th</sup> Annual Sylvia Winstein UCLA Emeriti Arts and Crafts Exhibit. Tuesday May 17<sup>th</sup> 2016 in the California Room of the Faculty Center**

As I assume the leadership of this wonderful program from Noël Carterette, I write on her behalf as well as mine, to remind you all that the Emeriti Association is continuing the tradition of hosting a show of the artistic creativity of our Emeriti and their spouses for all Emeriti Association members to enjoy.

The Sylvia Winstein endowment fund was established to help us maintain the program she so generously gave her time to for many years, and its current viability is sustained by those who exhibit and those who come to appreciate the art and those who donate to the fund. The future viability relies on the participation of new artistic exhibitors and the many donors who have and continue to support the program.

If you have never exhibited before, but have an art or craft that you would like to share with your fellow colleagues, let me know and we can discuss your participation. Exhibitors from the past to present, and those of you who will become the future by showing work for the first time, will be joined by many colleagues and friends for an artistic and social experience. It is nev-

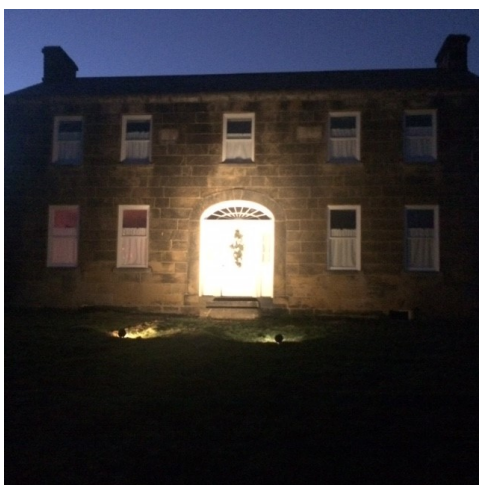
er too soon to mark your calendar. Formal invitations will go out to EA members in the spring, and direct contacts to all recent exhibitors have already been sent.

You can also contact me anytime by email: [blippe@ucla.edu](mailto:blippe@ucla.edu) if you are considering exhibiting for the first time or are a past exhibitor and have questions about participating again. Finally, it is never too soon to make a donation to continue supporting this wonderful program. Send your donations to The UCLA Emeriti Association, 1116 Rolfe Hall, Box 951437, LA 90095 and make your check out to UCLA EA Art Show. Looking forward to seeing many of you on May 17<sup>th</sup> 2016.

*Barbara Lippe  
Arts and Crafts Committee Chair*

## EDDIE MURPHY WAS HOME FOR THE HOLIDAYS

In the last issue of the UCLA Emeriti



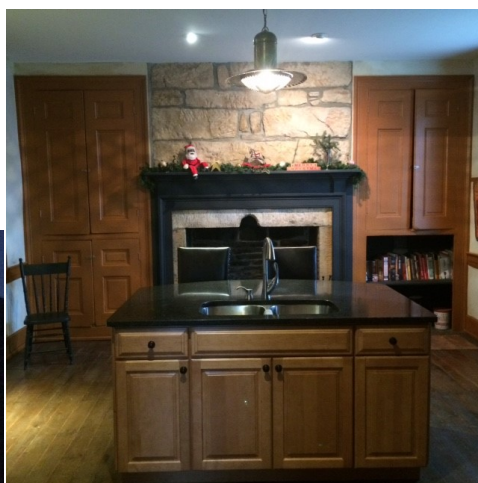
iti Newsletter, Steve Cederbaum reported on the visit he and his wife Evelyn made to Eddie Murphy's new (old) home in Wellsville, Ohio. In following up, Diane Childs learned that Eddie's home was about 90 percent complete and she

expected to be able to host Thanksgiving dinner there.

Eddie recently explained that,



“While we were able to host Thanksgiving gathering there were still details to be completed (e.g. counters yet to be installed on new cabinets).”



“I am happy to report when I hosted Christmas Eve open house, all those details had been finished! The house was full of laughter, conversation and festive smells as well as logs burning in some of the fireplaces. The house was once again alive after 50+ years of being uninhabitable. I am thoroughly enjoying living here.”

It's terrific to be able to picture Eddie's guests being welcomed by the glow illuminating her front door and to imagine the cozy atmosphere

of her beautiful home decorated for Christmas. There must have been some really wonderful aromas coming from the kitchen that is extremely functional yet honors the 1846 vintage of Eddie's historic house. Maybe some of Eddie's Oatmeal Spice Cake with Browned Butter Frosting are among them? (*Betty Crocker's Best-Loved Recipes*, Page 325)

*Diane Childs  
Corresponding Secretary*

## A TRIBUTE TO JEAN AROESTE, NEWSLETTER EDITOR EMERITA

I would like to recognize the exceptional service of Jean Aroeste to our Emeriti Association. In 1998 Jean joined the UCLA Emeriti Association (EA) following her retirement as a librarian. Her first position was Recording Secretary of the board of the UCLA EA, a position in which she served for four years. In 1999 she was involved in a joint ad-hoc committee involving many members of the Board in partnership with UCLARA representatives in the development of the Belmont Village Westwood, an Assisted Living, Alzheimer's Care Facility adjacent to the Westwood United Methodist Church on Wilshire Boulevard. The next important position she held began in 2007 as Editor of the Emeriti Association's Newsletter and for the next eight years to the present time applied her skills with devotion, inspiration, enterprise and personal courage.

Jean's first position as a librarian (1954-1962) was at the Harvard University Library where she was in charge of acquisitions and in the support of staff. Her next position until the end of 1978 was reference librarian at UCLA. While at UCLA

she was co-editor of the “Directory of scholarly and research publishing opportunities: social sciences, and science and technology” (1971). Her final position as a librarian was as Head of Reference and Collection Development in the library at Princeton University. When she retired, she returned to Los Angeles in December 1997 and made her home in Pacific Palisades.

Jean’s qualifications included receiving a BA at the University of Wisconsin (1954) then a MLS at Simmons College (1962), followed by an MA in English at UCLA (1967).

Many of you may be surprised to learn that Jean was an avid Star-Trek fan and put her writing skills and creative imagination to work by becoming one of only four writers with no previous television writing credits to develop and sell scripts to the Star-Trek program. Her first script was entitled “Is There in Truth No Beauty”, was unsolicited yet was accepted by the Star Trek producers. Her next script was entitled “A Handful of Dust” which was eventually produced as “All our Yesterdays”, a performance that was the second-to-last of the original Star-Trek series.

*John Edmond  
Newsletter Co-Editor*

## MS. EDDIE MURPHY IS AN HONORARY...

Former director of the UCLA Emeriti/Retirees Relations Center (ERRC) Eddie Murphy retired at the end of December, 2014, and returned to her hometown of Wellsville, Ohio. Although Eddie will be a “snowbird,” she spent this winter in Wellsville working on the restoration of her 19th century

farmhouse. [See separate article.]

The UCLA Emeriti Association board recently voted unanimously to award Eddie honorary membership in the organization.

## NEW AND NOTABLE

**Robert Finkelstein**, professor emeritus in the department of physics and astronomy, is turning 100 this year. The department is cele-

brating with a Finkelstein Centennial at UCLA’s Faculty Center on Saturday, April 2. The day’s activities will include invited talks, beginning at 4 p.m., followed by dinner. Please see <https://conferences.pa.ucla.edu/finkelstein-centennial/index.html> for more information and to register. Finkelstein earned his Ph.D. from Harvard in 1941, but his first publication was in 1940. He was hired by UCLA in 1948. “Although UCLA was very much in its infancy when I first came to it, I was convinced that it would become a major university,” he recalled. “The future looked very promising.” His most recent publication was in 2015.

The UCLA School of Theater, Film and Television (TFT) announced the establishment of a scholarship in honor of professor emeritus **Howard Suber**. The UCLA Suber Structure and Strategy Scholarship will be given to one TFT student per academic year from either the Producer’s Program, the Screenwriting Program, or Cinema and Media Studies—the three areas in which Suber has taught. The scholarship was established by TFT alumni Sacha Gervasi and Felicia D. Henderson, who announced a \$50,000 gift during a celebration they hosted for Suber’s 50th anniversary as a member of UCLA’s faculty. During the anniversary celebration, Suber was also honored with a plaque from the City of Los Angeles, presented to him by City Councilmember Paul Koretz. Suber was a recipient of the prestigious 2013-2014 Dickson Emeriti Professorship Award, the highest honor bestowed upon a retired UCLA faculty member.

## EMERITI EXPRESS

**Diane de Anda**, professor emerita of social welfare, recalls her younger years spent listening to stories from her grandparents about

### LET US WELCOME

Judith Brill  
*Pediatrics*

R. Edward Geiselman  
*Psychology*

David Halle  
*Sociology*

Dominique Hanssens  
*Management*

Sally Maliski  
*Nursing*

Robert Mare  
*Sociology*

Jack Powazek  
*VC - Administration*

James Schultz  
*Germanic Languages*

Richard Strassburg  
*Asian Languages and Cultures*

David Teplow  
*Neurology*

Richard Thorne  
*Atmospheric and Oceanic Sci*

Betty Tsao  
*Rheumatology*

Maurice Zeitlin  
*Sociology*

the Mexican revolution and other historical events they lived through. Today, de Anda is an award-winning author of children's books that tell stories of her own. They include the bilingual *The Patchwork Garden/Pedacitos de huerto* (Piñata Books, 2013) and *A Day without Sugar/Un Dia Sin Azucar* (Piñata Books, 2012). She also publishes short stories and poetry in literary journals and satirical pieces about political and social issues in *Humor Times* and *Satire and Comment*.

Professor emeritus **Richard Roll**, the Joel Fried Chair in Applied Finance as well as the Linde Professor of Finance at Cal Tech has won the 2015 Onassis Prize for Finance. Roll shares the award with professor Stewart Myers of MIT. Awarded to the world's foremost academics in the fields of finance, international trade and shipping, the prizes include a cash award of \$200,000.

Computer science professor emeritus **Judea Pearl** received an Honorary Doctor of Science and Technology degree from Carnegie Mellon University for his "landmark achievements in the theory and practice of artificial intelligence" on May 17, 2015. He also gave the keynote address at the Society for Epidemiologic Research 2015 Conference on June 16, 2015, in Denver. Being asked to give the John C. Cassel Memorial Lecture is among the highest honors bestowed by the society. Pearl is president of the Daniel Pearl Foundation, named in honor of his son.

Psychology professor emeritus **Robert Bjork** is one of two faculty who have been selected by the UCLA Academic Senate as the recipients of the 2015-2016 Faculty Research Lectureships. Bjork is a distinguished research professor in the field of cognitive psychology. He has been recognized extensively in the field of psychology, in-

cluding several times by American Psychological Association. He will give a lecture on a topic of his choice in spring, 2016.

**Harold Demsetz**, an emeritus professor of business economics at UCLA, has won the Elinor Ostrom Lifetime Achievement Award from the International Society of New Institutional Economics.

The award is named for UCLA alumna Elinor Ostrom, who in 2009 became the fifth UCLA graduate to win a Nobel Prize and the first woman to win the Nobel Memorial Prize in Economic Sciences. The award was conferred upon Demsetz on June 20, 2015, during the society's annual meeting at Harvard University.

## PLEASE SHARE YOUR NEWS

*If you have been honored with an award, drafted into a new initiative, published or edited a new book, or have other news you would like to share with other emeriti, please inform the editors via [emeriti@errc.ucla.edu](mailto:emeriti@errc.ucla.edu).*

**Ken Klee**, professor emeritus of law, has received the 2015 Distinguished Service Award from the American College of Bankruptcy. He was presented with the award in March in recognition of his significant accomplishments in improving the administration of justice in the insolvency and bankruptcy field.

**John Hawkins**, emeritus professor of social sciences and comparative education, has published *Research, Development and Innovation in Asia Pacific Higher Education* (New York: Palgrave Macmillan, 2015), which focuses on the rapidly

changing higher education environments in Asia and the Pacific Rim. With co-editor Ka Ho Mok of the Hong Kong Institute of Education and Lingnan University, Hawkins explores the challenges posed by economic growth and social development, as well as recent policies and practices that promote research, development, and partnerships between universities, industry, and business in these regions.

Distinguished professor emeritus of sociology **Don Treiman** has pledged \$200,000 to establish the Donald J. Treiman California Center for Population Research Endowed Student Research Award. The gift will provide up to \$6,500 a year to support a graduate student's research in UCLA's California Center for Population Research (CCPR), one of the world's leading centers for basic science and policy-related research on population processes.

The UCLA Molecular Biology Institute and the Department of Chemistry and Biochemistry honored **Paul & Lyda Boyer** for their generous support of postdoctoral fellows at a ceremony and reception on October 9, 2015. The event also celebrated the 2015 Postdoctoral Awardees. Nobel laureate Paul Boyer is a professor emeritus of chemistry & biochemistry and was founding director of the Molecular Biology Institute.

After serving for several years as MC at the awards ceremony of the Joint Academic Retreat of the UCLA Department of Human Genetics & UCLA Intercampus Medical Genetics Fellowship, professor emeritus of pediatrics and human genetics **Steve Cederbaum** was himself honored last October ("Celebrating the exceptional career of Prof Stephen Cederbaum"). As one attendee said, "Celebrations in life are very important and I am so

**Annual Treasurer's Report for Fiscal Year 2014-15  
Ending on August 31, 2015**

<b>Balance Carried Forward</b>		<b>\$ 54,272.87</b>
Income:		
Contribution to Art Show	\$ 3,834.99	
Membership Dues	12,675.00	
Dinner Receipts	7,541.00	
Earned Interest	93.15	
Contributions/Donations	17,279.96	
<b>Total Income</b>		<b>41,424.10</b>
Expenses:		
Art Show	\$ 8,940.35	
Dinner Expenses	8,477.00	
Program & Refreshment	1,877.42	
Newsletters & Mailing	3,948.66	
CUCEA Dues & Travel	1,162.26	
Special Retirement Gift	5,000.00	
Other Expenses	1,732.93	
<b>Total Expenses</b>		<b>31,138.62</b>
<b>Ending Balance</b>		<b>64,558.35</b>

**IN MEMORIAM**

Lori Altshuler	1957-2015
Helen S. (Lena) Astin	1932-2015
Leonard Binder	1927-2015
Constance S. Bullock	19xx-2015
Leslie P. (Pat) Coyle	1934-2015
Mitchell P. Fink	1948-2015
Heinz-Otto Kreiss	1930-2015
Jacqueline Leavitt	1939-2015
Irving Maltzman	1929-2015
Claudia Parodi-Lewin	19xx-2015
Morris J. Paulson	1921-2015
Howard Reiss	1922-2015
Richard Allen Schmidt	1941-2015
Edward Soja	1940-2015
Bobby J. Williams	1930-2015

thrilled I was able to be part of this really deserved one for a mentor, a colleague, and a FRIEND of mine! Thank you Steve for everything you have done not just for me but for hundreds of doctors and scientists!"

Research Professor of Education **Mike Rose** was recently interviewed on NPR's "On Being with Krista Tippett." The interview is available online (Google "mike rose krista tippet" without quotation marks). His book *Back to School: Why Everyone Deserves a Second Chance at Education* was released in paperback last October. It examines the impact that returning to school from the workforce, military, or other life experiences has on improving the lives of students, the economy, and education itself,

by expanding and diversifying the student body. Rose has two other books that were recently updated and released in new editions: *The Mind at Work* and *Why School?: Reclaiming Education for All of Us* as well as a blog.

The UCLA Graduate School of Education & Information Studies (GSE&IS) hosted a meeting on "Investing in the Children and Families of South Los Angeles," at the campus of Soledad Enrichment Action (SEA), last October. The panel discussion was hosted by UCLA professor emeritus of education **Welford "Buzz" Wilms** and Avis Ridley-Thomas, co-directors of the Institute for Nonviolence in Los Angeles. It included L.A. County Sheriff Jim McDonnell and LAPD

Deputy Chief Bill Scott. The panel was moderated by Bishop Dave O'Connell of the Archdiocese of Los Angeles. UCLA's GSE&IS is seeking to collaborate with SEA and the Institute for Nonviolence in Los Angeles to promote a healthy and safe environment in the Vermont-Manchester area, which has been a historically troubled community in terms of violence, fear, and social isolation. The event launched a campaign to raise \$200,000 over the next two years as seed funding to establish the Community Center for Conflict Resolution and Restorative Justice. The Center will be headquartered at SEA and will leverage community assets and UCLA research to create a neighborhood conflict resolution program.

## NEWS FROM THE CENTER

### Flash Pass Update:

Starting in Winter 2016, librarians who have not had the emeritus title conferred, are no longer eligible. Emeriti are eligible to purchase a flash pass. If eligible for the senior rate, emeriti will receive the flash pass at no charge.

### First Fridays:

The next First Friday session will be offered Friday, February 4, 2016. These sessions afford retired faculty and staff an opportunity to learn more about their electronic devices. Bring your iPhones/iPads, laptops, digital cameras etc. and receive one-on-one training with a member of UCLA's technology staff. The clinic hours are 9:30 a.m. to 11:30 a.m.

### Coping with Grief:

The Emeriti/Retirees Relations Center invites you to an interactive talk on coping with grief. Wendy Walsdorf, a counselor at the UCLA Staff & Faculty Counseling Center will tell you what to expect when dealing with grief and provide take-aways to help you cope with grief. Complimentary parking is provided on-site.

**When:** Thursday, January 28, 2016 (10:00 a.m. to 11:00 a.m.)

**Where:** Belmont Village-Westwood (10475 Wilshire Blvd., Los Angeles, CA 90024)

### Hypertension:

Please join us for an interactive talk on hypertension. Dr. Anjay Rastogi is a UCLA Nephrologist who specializes in hypertension and kidney disease, and has been involved with a national study on blood pressure.

**When:** Thursday, February 18, 2016 (10:00 a.m. to 11:30 a.m.)

**Where:** Charles E. Young Research Library: Main Conference Room (Room 11360)

### Creative Writing Workshop

**When:** February 19, 2016 (12

## 2015-16 EMERITI ASSOCIATION BOARD

Betty Chang  
*President*  
bchang@sonnet.ucla.edu

Stephen Cederbaum  
*President-Elect*  
scederbaum@mednet.ucla.edu

Jean Aroeste  
*Newsletter Editor Emerita*  
jean.aroeste@gmail.com

Toshi Ashikaga  
*Book Exchange Chair*

Charles Berst  
*Biobibliographic Survey Chair*  
berst@humnet.ucla.edu

Carol Betti  
*Faculty Women's Club*  
bettiteaches@yahoo.com

Noël Carterette  
*Arts & Crafts Chair [Outgoing]*  
carteret@ucla.edu

Diane Childs  
*Corresponding Secretary/  
Newsletter Co-Editor*  
diane.childs@ucla.edu

John Edmond  
*Newsletter Co-Editor*  
jedmond@mednet.ucla.edu

Ragini Espinoza Gill  
*Ex-Officio/ERRC Director*  
rgill@errc.ucla.edu

Barbara Lippe  
*Recording Secretary/  
Arts & Crafts Chair [Incoming]*  
blippe@ucla.edu

John McDonald  
*Member-at-Large*  
jsm5525@ucla.edu

Bruce Miller  
*Faculty Center Representative*  
bruce.miller@anderson.ucla.edu

Daniel Mitchell  
*Past-President*  
daniel.j.b.mitchell@anderson.ucla.edu

Jane Permaul  
*Treasurer*  
jpermaul@saonet.ucla.edu

Barbara Sinclair  
*Member-at-Large*  
sinclair@polisci.ucla.edu

Anna Taylor  
*Membership Chair*  
ataylor@mednet.ucla.edu

Gloria Turner  
*Hospitality Chair*  
turner.gloria18@gmail.com

Maaza Woldemusie  
*Auditor*  
mwoldemu@ucla.edu

Noon)

**Location:** Extension Gayley Center, Room 114

Please RSVP for any of our programs by calling (310) 825-7456 or emailing [emeriti@errc.ucla.edu](mailto:emeriti@errc.ucla.edu).

To sign up for an one-on-one appointment with **Fidelity Investments**, please visit <http://getguidance.fidelity.com> and select, "UC Los Angeles Emeriti - Retiree Relations Center" as the Preferred Event Location. You can also sign up by calling 866-682-7787.

UCLA Emeriti Newsletter is published by the UCLA Emeriti Association and the UCLA Emeriti/Retirees Relations Center

Co-Editors: John Edmond  
Diane Childs

Editor Emerita: Jean Aroeste

Compositor: Jonathan Bates

1116 Rolfe Hall  
Box 951437  
Los Angeles, CA 90095-1437  
310/825-7456  
Fax 310/825-1572  
[emeriti@errc.ucla.edu](mailto:emeriti@errc.ucla.edu)